



UT VOCE ITA VITA

EXETER CATHEDRAL SCHOOL

Nursery | Pre-Prep | Prep

Child Protection and Safeguarding Policy (including Choristers and EYFS)

Reviewed by DSL and SLT: September 2025.

Pastoral Committee: October 2025

Next review: September 2026

Governor oversight: Full Board

Contents

Safeguarding Statement	Page 4
Key personnel	Page 4
Terminology	Page 5
1. Introduction	Page 5
2. Policy Principles	Page 6
3. Policy Aims	Page 6
4. Supporting Children	Page 7
5. Safe School, Safe Staff	Page 8
6. Roles and Responsibilities	Page 9
7. Confidentiality	Page 14
8. Child Protection Procedures	Page 14
9. Choristers	Page 18
10. Children who are particularly vulnerable	Page 18
11. Children who are lesbian, gay, bi or trans (LGBTQ+)	Page 19
12. Anti-Bullying / Cyberbullying	Page 20
13. Racist Incidents	Page 20
14. Radicalisation and Extremism	Page 20
15. Domestic Abuse	Page 21
16. Child Sexual Exploitation (CSE) and Child Criminal Exploitation (CCE) and County Lines	Page 21
17. Female Genital Mutilation (FGM)	Page 23
18. Forced Marriage	Page 23
19. Honour based Abuse	Page 23
20. One Chance Rule	Page 24
21. Mental Health	Page 24
22. Private Fostering Arrangements	Page 24
23. Looked After Children	Page 25
24. Children who are absent from Missing Education	Page 25
25. Online Safety (including AI)	Page 25
26. Child on child abuse	

Including sexual violence & sexual harassment	Page 27
27. Youth Produced Sexual Imagery (Sexting)	Page 29
28. Allegations against Staff	Page 31
29. Whistle-blowing	Page 32
30. Physical Intervention	Page 32
31. Use of Mobile Technology	Page 33
32. Confidentiality, Sharing Information and GDPR	Page 33
33. Linked Policies	Page 34
Appendix 1 – Safeguarding Flowchart	Page 35
Appendix 2 – Recognising signs of child abuse	Page 36
Appendix 3 – Sexual Abuse & Sexual Harassment	Page 39
Appendix 4 – Exploitation (including CSE and CCE)	Page 41
Appendix 5 – Female Genital Mutilation	Page 43
Appendix 6 – Domestic Abuse (including Operation Encompass)	Page 45
Appendix 7 – Radicalisation and Extremism	Page 46
Appendix 8 - What to do if you have an online Safety Concern	Page 48
Appendix 9 – Further advice on Child Protection	Page 49
Appendix 10 – Devon Children’s Front Door contacts	Page 50

Status & Review Cycle: Statutory/Annual
Next Review Date: Redraft September and Ratify November 2025

Safeguarding Statement

Exeter Cathedral School recognises our moral and statutory responsibility to safeguard and promote the welfare of all pupils and expects all staff, governors and volunteers to share this commitment. We endeavour to provide a safe and welcoming environment where children are respected and valued. We are alert to the signs of abuse, neglect and exploitation and follow our procedures to ensure that children receive effective support, protection and justice. We listen to our pupils and take seriously what they tell us, children are aware of the adults they can talk to if they have a concern. When there are concerns for a child’s welfare we may need to share information and work in partnership with other agencies (to include Devon and Cornwall Police, Channel, Devon Children’s Front Door (formally MASH), Devon Early Help and Devon Children’s Services.) We will ensure concerns are discussed with parents/carers first unless we have reason to believe that by doing so would be contrary to the child’s welfare. Child protection forms part of the school’s safeguarding responsibilities and we take a zero tolerance approach to abuse. The Child Protection and Safeguarding policy underpins and guides Exeter Cathedral School’s procedures and protocols to ensure its pupils and staff are safe.

Key Personnel

Role	Name	Email	Telephone
Designated Safeguarding Lead (DSL)*	Emma Ross	e.ross@exetercs.org	01392 255298
Deputy DSL(s)*	Heidi Lawford (Head of Pre-Prep) Rhys Davies (Head of Senior House) Hollie Fleming (Head of Lower Years)	h.lawford@exetercs.org r.davies@exetercs.org h.fleming@exetercs.org	
Deputy DSL and Nominated Safeguarding Lead for Pre-Prep and Nursery	Heidi Lawford	h.lawford@exetercs.org	01392 410348
Nominated Safeguarding Governor	Michael Totterdell	m.totterdell@exetercs.org	
Deputy Nominated Safeguarding Governor	Jenny Ellis	j.ellis@exetercs.org	
Nominated Online Safety Governor	Jenny Ellis	j.ellis@exetercs.org	
Chair of Governors	Charles Beer	c.beer@exetercs.org	

*Out of hours contact details will be made available to staff.

**Holiday/emergency contacts will be shared with the appropriate agencies and LA safeguarding boards/hubs

Terminology

Safeguarding and promoting the welfare of children is defined as:

- protecting children from maltreatment; inside or outside of the home, including online.
- providing help and support to meet the needs of children as soon as problems emerge.
- preventing impairment of children's mental and physical health or development;
- ensuring that children grow up in circumstances consistent with the provision of safe and effective care
- Promoting the upbringing of children with their birth parents, or otherwise their family network through a kinship care arrangement, whenever possible and where this is in the best interests of the children.
- taking action to enable all children to have the best outcomes in line with the outcomes set out in the Children's Social Care National Framework.

(Working Together to Safeguard Children)

Child Protection is a part of safeguarding and promoting welfare. It refers to the activity that is undertaken to protect specific children who are suffering, or are likely to suffer, significant harm.

Staff refers to all those working for or on behalf of the school, full or part time, temporary or permanent, in either a paid or voluntary capacity.

Child includes everyone under the age of 18 or 25 if a care leaver.

Parents refers to birth parents and other adults who are in a parenting role, for example step-parents, foster carers, adoptive parents and LA corporate parents.

For the avoidance of doubt this policy applies to the whole school including choristers and EYFS.

1. Introduction

Safeguarding legislation and guidance

The following safeguarding legislation and guidance has been considered when drafting this policy:

- Section 157 of the Education Act 2002
- The Education (Independent Schools Standards) (England) Regulations 2003
- The Safeguarding Vulnerable Groups Act 2006
- The Teacher Standards 2012
- Working Together to Safeguarding Children 2023
- Keeping Children Safe in Education 2025
- Information Sharing 2018
- What to do if you're worried a child is being abused 2015
- Filtering and monitoring standards in schools and colleges (DfE)

2. Policy Principles

The welfare of the child is paramount

- All children regardless of age, disability, gender reassignment, race, religion or belief, sex, sexual orientation or SEND have equal rights to protection, safeguarding and opportunities.
- We recognise that all adults, including temporary staff¹, volunteers and governors, have a full and active part to play in protecting our pupils from harm and have an equal responsibility to act on any suspicion or disclosure that may suggest a child is at risk of harm;
- All staff believe that our school should provide a caring, positive, safe and stimulating environment that promotes the social, physical, mental wellbeing and moral development of the individual child.
- Pupils and staff involved in child protection issues will receive appropriate support and supervision.

3. Policy Aims

- To raise the awareness of all teaching and non-teaching staff of the need to safeguard children and of their responsibilities in identifying and reporting possible cases of abuse.
- To provide an environment in which children and young people feel safe, secure, valued and respected, and feel confident to, and know how to approach adults if they are in difficulties, believing they will be effectively listened to.
- To demonstrate the school's commitment with regard to safeguarding and child protection to pupils, parents and other partners.
- Safeguarding incidents and/or behaviours can be associated with factors outside of school and can occur between children outside of school. All staff, but especially the designated safeguarding lead (or deputy) should be considering the context within which such incidents and/or behaviours occur: familial or contextual.
- To ensure the Designated Safeguarding Lead (or deputy) and all staff will give full consideration to the use of appropriate assessments, resources and agency support when identifying the factors present in a child's life that are a threat to their safety and/or welfare. (Familial or contextual.)
- To provide a systematic means of monitoring children known or thought to be at risk of harm, and ensure we, the school, contribute to assessments of need and support packages for those children.
- To emphasise the need for good levels of communication between all members of staff.
- To develop a structured procedure within the school which will be followed by all members of the school community in cases of suspected abuse.
- To develop and promote effective working relationships with other partnership agencies, particularly Children's Social Care, Police and Health.
- To support the child's development in ways that will foster security, confidence and independence.

¹ Wherever the word "staff" is used, it covers ALL staff on site, including ancillary supply and self-employed staff, contractors, volunteers working with children etc and governors.

- To ensure that all staff working within our school who have substantial access to children have been checked as to their suitability, including verification of their identity, qualifications, and a satisfactory DBS check (according to guidance), and a single central record is kept for audit.
- Provide clarity and expectations on professional behaviours and code of conduct including lone working requirements and contact with children/families outside the school setting, including e-mail.

4. Supporting Children

- We recognise that a child who is abused or witnesses violence may feel helpless and humiliated and could experience barriers to making a disclosure.
- We recognise that the school may provide the only stability in the lives of children who have been abused or who are at risk of harm and may play a significant part in the prevention of harm.
- We understand that the behaviour of a child in these circumstances may range from that which is perceived to be normal to aggressive or withdrawn as well as exhibiting signs of mental health problems.
- We understand the impact on a child's mental health, behaviour and education from familial and/or contextual abuse.
- **Our school will support all children by:**
- Encouraging self-esteem and self-assertiveness, through the curriculum as well as our relationships, whilst not condoning aggression or bullying (incl. Cyber bullying)
- Promoting a caring, safe and positive environment within the school.
- Responding sympathetically to any requests for time out to deal with sensory overwhelm, distress and anxiety.
- Offering details of helplines, counselling or other avenues of external support.
- Liaising and working together with all other settings, support services and those agencies involved in the safeguarding of children.
- Notifying Children's Front Door as soon as there is a significant concern.
- Providing continuing support to a child about whom there have been concerns who leaves the school by ensuring that appropriate information is copied under confidential cover to the child's new setting and ensuring the school medical records are forwarded as a matter of priority.
- Children are taught to understand and manage risk through PHSE and RSE, and through all aspects of school life. This includes online safety, healthy relationships, consent, sexual harassment and violence, equality and diversity, road safety and injury prevention, public transport safety and water safety.
- By accessing and utilising the necessary resources, guidance and toolkits to support the identification of children requiring mental health support, support services and assessments and the subsequent systems and processes.
- reassuring victims that they are being taken seriously and that they will be supported and kept safe.

Prevention / Protection

- We recognise that the school plays a significant part in the prevention of harm to our children by providing children with good lines of communication with trusted adults, supportive friends and an ethos of protection.

The school community will therefore:

- Work to establish and maintain an ethos where children feel secure, are encouraged to talk and are always listened to.
- Include regular consultation with children e.g. participation in anti-bullying week, asking children to report whether they have had happy/sad lunchtimes/playtimes
- Ensure that all children know there are adults in the school whom they can approach if they are worried or in difficulty.
- Include safeguarding across the curriculum, including PSHE, opportunities which equip children with the skills they need to stay safe from harm and to know to whom they should turn for help. In particular this will include anti-bullying work, information about peer on peer abuse (sexual harassment and sexual violence, consent), online-safety, road safety, pedestrian and cycle training. Provide focussed activities to prepare key year groups for transition to new settings and/or key stages e.g. more personal safety/independent travel.
- Ensure all staff, pupils and parents are aware of school guidance for the use of mobile technology and the safeguarding issues around the use of mobile technologies and their associated risks have been shared.

5. Safe School, Safe Staff

We will ensure that;

- All staff, governors and volunteers read KCSiE Part 1 and Annex B annually and sign to say they read and understood it.. This forms part of the induction of all new staff.
- On induction all staff (including temporary and supply staff), governors and volunteers receive information about the school's safeguarding arrangements, the school's safeguarding statement, staff behaviour policy (code of conduct), child protection and safeguarding policy, behaviour policy, the safeguarding response to children who are absent or go missing from education, the role and names of the Designated Safeguarding Lead and deputies, and sign to say they have read, understood and will abide by it.
- All staff receive safeguarding and child protection information, including online safety, at induction in line with advice from Devon Children and Families Partnership (DCFP) which is updated annually and during staff meetings. These meetings take place every half term;
- All members of staff are trained in and receive regular updates in online safety and reporting concerns;
- All members of staff are trained in the Prevent duty at least annually. This includes training on what to do if they have any concerns.
- All staff and governors have annual Level 2 child protection awareness training, updated by the DSL as appropriate, to maintain their understanding of the signs and indicators of abuse;

- All staff are trained and have an understanding of the expectations, applicable roles and responsibilities in relation to filtering and monitoring.
- The Child Protection and Safeguarding policy is made available via the school website. All parents/carers are made aware of the responsibilities of staff members with regard to child protection procedures through the publication of the Child Protection Policy.
- The school provides a coordinated offer of Early Help when additional needs of children are identified and contributes to early help arrangements and inter-agency working and plans. Assessments and plans are recorded on the R4C system;
- all staff will understand their role in the early help process;
- Our lettings policy will seek to ensure the suitability of adults working with children on school sites at any time, by having evidence of having DBS checks having been undertaken.
- The school does not need to keep a copy of DBS certificates in order to fulfil the duty of maintaining the single central record.
- Shortlisted candidates are informed that online searches may be done as part of safer recruitment practices.
- Community users organising activities for children are aware of the school's Child Protection and Safeguarding Policy, guidelines and procedures;
- When an individual or organisation uses our school's premises and there is a safeguarding allegation, the School will follow our safeguarding policy and procedures, including informing the Local Authority Designated Officer (LADO).
- A child educated off site on dual roll arrangements will be safeguarded by the DSL/safeguarding leads at the alternative provision venue and the policies of these providers will apply. However, the child remains the substantive responsibility of their original school who must assure themselves and ensure that the setting is fit for purpose. Annual quality assurance of offsite/dual roll/alternative provision is the responsibility of the DSL at the original (substantive or referring) school . Schools require written confirmation of the safer recruitment policies and procedures. Regular contact must be made with the alternative provider and the DSL of the home school who should communicate and update each other regularly. (KCSiE). Schools should also hold placement reviews at least half termly.
- The name of the designated members of staff for child protection are clearly advertised in the school;
- All Governors will be given a copy of Part 2 and Annex B of Keeping Children Safe in Education 2025 and will sign to say they have read, understood and will abide by the information contained.

6. Roles and Responsibilities

The Governing Body understand and fulfil their responsibilities, namely

- To ensure that there is a Child Protection and Safeguarding policy together with a staff behaviour policy (code of conduct);
- Child protection and safeguarding, recruitment and managing allegations policies and procedures, including the staff behaviour policy (code of conduct), are consistent with

Devon Children and Families Partnership and statutory requirements, are reviewed annually and that the Child Protection and Safeguarding policy is publicly available on the school website or by other means;

- Ensures that all staff including temporary staff and volunteers are provided with details of the school's child protection policy and staff Code of Conduct;
- Ensure that all governors receive appropriate safeguarding child protection (including online) training at induction. This training should equip them with the knowledge to provide strategic challenge to test and assure themselves that the safeguarding policies and procedures are effective and support the delivery of a robust whole school approach to safeguarding. This training should be regularly updated.
- All staff have read Keeping Children Safe in Education (2025) Part 1 and Annex B and that mechanisms are in place to assist staff in understanding and discharging their roles and responsibilities as set out in the guidance.
- The school operates a safer recruitment procedure that includes statutory checks on staff suitability to work with children and disqualification by association regulations and by ensuring that there is at least one person on every recruitment panel who has completed safer recruitment training;
- The school has procedures for dealing with allegations of abuse against staff (including the headteacher), supply staff, volunteers and against other children and that a referral is made to the DBS if a person in regulated activity has been dismissed or removed due to safeguarding concerns, or would have had they not resigned.
- A member of the Governing Body/Board, usually the Chair, is nominated to liaise with the LA on Child Protection issues and in the event of an allegation of abuse made against the Headteacher
- A member of the senior leadership team has been appointed as the Designated Safeguarding Lead (DSL) by the Governing Body who will take lead responsibility for safeguarding and child protection and that the role is explicit in the role holder's job description;
- On appointment, the DSL and deputies undertake appropriate Level 3 identified training offered by DCFP or other provider every two years;
- All other staff have safeguarding training updated as appropriate, but at least annually;
- At least one member of the governing body has completed safer recruitment training to be repeated every five years;
- Children are taught about safeguarding (including online safety) as part of a broad and balanced curriculum covering relevant issues to meet their needs including children who have recognised vulnerabilities. This content should recognise both national and local contexts and recognises the age and stage of children alongside any SEND needs.
- Appropriate safeguarding responses are in place for children who are absent from education, particularly on repeat occasions, to help identify the risk of abuse and neglect including sexual abuse or exploitation and to help prevent the risks of their going missing in future;
- Ensure appropriate online filtering and monitoring systems are in place and regularly review their effectiveness. Ensure that the leadership team and relevant staff have an

awareness and understanding of the provisions in place and manage them effectively and know how to escalate concerns when identified;

- Governing bodies and proprietors should consider the number of and age range of their children, those who are **potentially at greater risk of harm, and how often they access the IT system along with the proportionality of costs versus safeguarding risks.**
- Enhanced DBS checks (without barred list checks, unless the governor is also a volunteer at the school) are in place for all Governors;
- Any weaknesses in Child Protection are remedied immediately;

The Headteacher will ensure that;

- The Child Protection and Safeguarding Policy and procedures are implemented and followed by all staff;
- Sufficient time, training, support, resources, including cover arrangements where necessary, is allocated to the DSL and deputy DSLs to carry out their roles effectively, including the assessment of pupils and attendance at strategy discussions and other necessary meetings;
- Where there is a safeguarding concern that the child's wishes and feelings are taken into account when determining what action to take and what services to provide;
- Systems are in place for children to express their views and give feedback which operate with the best interest of the child at heart;
- All staff feel able to raise concerns about poor or unsafe practice and that such concerns are handled sensitively and in accordance with the whistle-blowing procedures;
- That pupils are provided with opportunities throughout the curriculum to learn about safeguarding, including keeping themselves safe online;
- They liaise with the Local Authority Designated Officer (LADO), before taking any action and on an ongoing basis, where an allegation is made against a member of staff, supply staff or volunteer;
- Anyone who has harmed or may pose a risk to a child is referred to the Disclosure and Barring Service.
- Ensuring that staff are supported and their wellbeing is prioritised.

The Designated Safeguarding Lead;

- Holds ultimate responsibility for safeguarding and child protection (including online safety) in the school and is a member of the SLT;
- Acts as a source of support and expertise in carrying out safeguarding duties for the whole school community;
- Will have the necessary knowledge and understanding to recognise possible children at risk of contextual and/or familial abuse or exploitation;
- Encourages a culture of listening to children and taking account of their wishes and feelings;
- Ensures that detailed written records of all concerns and actions are made and such records are stored securely on CPOMS;

- Risk assesses all new safeguarding and child protection concerns and incidents, acts on the assessment of risk and records all actions on CPOMS;
- Chairs a weekly safeguarding team meeting with DDSLs to review all safeguarding and child protection incidents recorded in the past week plus any bullying, racist, homophobic and online safety incidents. At this meeting all incidents and actions are reviewed including the risk assessment of those incidents
- Refreshes every two years their knowledge and skills to enable them to carry out the role and at regular intervals but at least annually accesses updates to keep up with any developments relevant to their role;
- Is trained in the Prevent duty both as part of the Level 3 training and in separate annual training;
- Receives regular updates from ISI and DCFP;
- Will refer a child if there are concerns about possible abuse, to the Children’s Front Door and act as a focal point for staff to discuss concerns. Enquiries² must be followed up in writing, if referred by telephone;
- Will keep detailed, accurate records, either written or using appropriate online software, of all concerns about a child even if there is no need to make an immediate referral;
- Will keep accurate records of decision making and rationale when the outcome is not to make a referral;
- Will ensure that all such records are kept confidential, stored securely and are separate from pupil records, until the child’s 25th birthday;
- Will ensure that an indication of the existence of the additional file is marked on the pupil records;
- Will ensure that when a pupil leaves the school, relevant child protection information is passed to the new school (separately from the main pupil file) as soon as possible, ensuring secure transit and that confirmation of receipt is obtained;
- In addition to the child protection file, the designated safeguarding lead should also consider if it would be appropriate to share any information with the DSL of the new school or college in advance of a child leaving. For example, information that would allow the new school or college to continue supporting victims of abuse and have that support in place for when the child arrives. All transfers should be made securely;
- Will liaise with the Local Authority and work with other agencies and professionals in line with Working Together to Safeguard Children. These include Devon and Cornwall police, Devon Children and Family Partnership (DCFP), Devon Early Help, Operation Encompass;
- Has a working knowledge of DCFP procedures;
- Will ensure that either they, or another staff member, attend case conferences, core groups, or other multi-agency planning meetings, contribute to assessments, and provide a report where required which has been shared with the parents;
- Will ensure that any pupil currently with a child protection plan who is absent in the educational setting without explanation for two days is referred to their social worker;

² Online forms are available via [DCFP](#).

- Will ensure that all staff sign to say they have read Keeping Children Safe in Education Part 1 and Annex B;
- Will organise child protection and safeguarding induction, regularly updated training and a minimum of annual updates (including online safety) for all school staff, keep a record of attendance and address any absences;
- Has the responsibility of understanding the filtering and monitoring systems and the processes in place.
- An understanding of expectations, applicable roles and responsibilities in relation to filtering and monitoring is included in safeguarding and child protection training at induction for all staff.
- Will contribute to and provide, with the Headteacher and Chair of Governors, the “Audit of Statutory Duties and Associated Responsibilities” (S175/157 audit) to be submitted annually to the Education Safeguarding Team working on behalf of Devon County Council;
- Has an understanding of locally agreed processes for providing early help and intervention and will support members of staff where Early Help and/or Safer Me (concerns around exploitation) is appropriate;
- Will ensure that the name of the designated members of staff for Child Protection, the Designated Safeguarding Lead and deputies, are clearly advertised in the school.

The Deputy Designated Safeguarding Leads

- Are trained to the same standard as the Designated Safeguarding Lead and, in the absence of the DSL, carry out those functions necessary to ensure the ongoing safety and protection of pupils. In the event of the long-term absence of the DSL the deputies will assume all of the functions above.

All School Staff

- Maintaining an attitude of ‘it could happen here’ where safeguarding is concerned.
- Understand that it is everyone’s responsibility to safeguard and promote the welfare of children and that they have a role to play in identifying concerns, sharing information and taking prompt action;
- Consider, at all times, what is in the best interests of the child;
- Will be aware of the indicators of abuse and neglect both familial and contextual; and recognise that contextual harm can take a variety of different forms;
- Know what to do if a child tells them they are being abused, exploited or neglected’;
- Understand that children may not feel ready or know how to tell someone that they are being abused, exploited or neglected, and/or they may not recognise their experiences as harmful This could be due to their vulnerability, disability and/or sexual exploitation or language barriers;
- Recognising that children missing, or absent from education can act as a vital warning sign to a range of safeguarding issues including neglect, sexual abuse and child sexual and criminal exploitation.
- Will refer any safeguarding or child protection concerns to the DSL or if necessary where the child is at immediate risk to the police or Children’s Services;

- Will be aware of the process for making referrals to local authority social care and for statutory assessments under the Children Act 1989;
- Are aware of the Early Help³ process and understand their role within it including identifying emerging problems for children who may benefit from an offer of Early Help, liaising with the DSL in the first instance and supporting other agencies and professionals in an early help assessment through information sharing. In some cases staff may act as the Lead Professional in Early Help Cases;
- Will provide a safe environment in which children can learn;
- Will be able to reassure victims that they are being taken seriously.
- Will endeavour to safeguard and protect all our children conscientiously and consistently regardless of others' fame, fortune or favour.

7. Confidentiality

- Exeter Cathedral School recognises that in order to effectively meet a child's needs, safeguard their welfare and protect them from harm the school must contribute to inter-agency working in line with Working Together to Safeguard Children (2023) and share information between professionals and agencies where there are concerns.
- All staff must be aware that they have a professional responsibility to share information with other agencies in order to safeguard children and that the Data Protection Act 2018⁴ is not a barrier to sharing information where the failure to do so would place a child at risk of harm.
- All staff must be aware that they cannot promise a child to keep secrets which might compromise the child's safety or wellbeing.
- However, we also recognise that all matters relating to child protection are personal to children and families. Therefore, in this respect they are confidential and the Headteacher or DSLs will only disclose information about a child to other members of staff on a need to know basis.
- We will always undertake to share our intention to refer a child to MASH with their parents /carers unless to do so could put the child at greater risk of harm, or impede a criminal investigation. If in doubt, we will contact the Children's Front Door consultation line.

8. Child Protection Procedures

- Abuse, neglect and exploitation are forms of maltreatment of a child. Somebody may abuse or neglect a child by inflicting harm or by failing to act to prevent harm. Children may be abused in the family or in an institutional or community setting by those known to them or, more rarely, by others. Abuse can take place wholly online, or technology may be used to facilitate off line abuse. They may be abused by an adult or adults or by another child or children.

³ Detailed information on early help can be found in Chapter 1 of [Working Together to safeguard children](#)

⁴ The UK Data Protection Act 2018 (DPA 2018) is supplementary to the General Data Protection Regulation 2016 (the GDPR) and replaces DPA 1998.

- Abuse, neglect and exploitation may also take place outside of the home and this may include (but is not limited to), sexual exploitation criminal exploitation, serious youth violence, radicalisation.
- Further information about the four categories of abuse; physical, emotional, sexual and neglect, and indicators that a child may be being abused can be found in appendices 1 and 2.
- Any child in any family in any school could become a victim of abuse. Staff should always maintain an attitude of “It could happen here”.
- There are also a number of specific safeguarding concerns that we recognise our pupils may experience;
 - child missing from education
 - child missing from home or care
 - child sexual exploitation (CSE), child criminal exploitation (CCE)
 - bullying including cyberbullying
 - domestic abuse
 - drugs
 - fabricated or induced illness
 - faith abuse
 - female genital mutilation (FGM)
 - forced marriage
 - gangs and youth violence
 - gender-based violence/violence against women and girls (VAWG)
 - poor mental health
 - private fostering
 - radicalisation/ extremism / extortion
 - youth produced sexual imagery (sexting)
 - teenage relationship abuse
 - trafficking
 - child on child abuse
 - upskirting
 - serious violence
 - sexual harassment

Staff are aware that behaviours linked to drug taking, alcohol abuse, truanting and sexting put children in danger and that safeguarding issues can manifest themselves via child on child abuse.

We also recognise that abuse, neglect and safeguarding issues are complex and are rarely standalone events that can be covered by one definition or label. Staff are aware that in most cases multiple issues will overlap one another.

If staff are concerned about a child’s welfare

- If staff notice any indicators of abuse/neglect or signs that a child may be experiencing a safeguarding issue they should record these concerns on CPOMS (Child Protection Online Management System) or if not available on an Expression of Concern form and pass it to the DSL. They may also discuss their concerns in person with the DSL but the details of the concern should be recorded in writing.

- There will be occasions when staff may suspect that a pupil may be at risk, but have no ‘real’ evidence. The pupil’s behaviour may have changed, their artwork could be bizarre, they may write stories or poetry that reveal confusion or distress, or physical or inconclusive signs may have been noticed.
- We recognise that the signs may be due to a variety of factors, for example, a parent has moved out, a pet has died, a grandparent is very ill or an accident has occurred. However, they may also indicate a child is being abused or is in need of safeguarding.
- In these circumstances staff will try to give the child the opportunity to talk. It is fine for staff to ask the pupil if they are OK or if they can help in any way.
- Following an initial conversation with the pupil, if the member of staff remains concerned they should discuss their concerns with the DSL and put them in writing. Records should include:
 - a clear and comprehensive summary of the concern;
 - details of how the concern was followed up and resolved;
 - a note of any action taken, decisions reached and the outcome.
- If the pupil does begin to reveal that they are being harmed, staff should follow the advice below regarding a pupil making a disclosure.

If a pupil discloses to a member of staff

- We recognise that it takes a lot of courage for a child to disclose they are being abused. They may feel ashamed, guilty or scared, their abuser may have threatened that something will happen if they tell, they may have lost all trust in adults or believe that what has happened is their fault. Sometimes they may not be aware that what is happening is abuse.
- A child who makes a disclosure may have to tell their story on a number of subsequent occasions to the police and/or social workers. Therefore, it is vital that their first experience of talking to a trusted adult is a positive one.

During their conversation with the pupil staff will;

- Listen to what the child has to say and allow them to speak freely
- Remain calm and not overreact or act shocked or disgusted – the pupil may stop talking if they feel they are upsetting the listener
- Reassure the child that it is not their fault and that they have done the right thing in telling someone
- Not be afraid of silences – staff must remember how difficult it is for the pupil and allow them time to talk
- Take what the child is disclosing seriously
- Ask open questions and avoid asking leading questions
- Avoid jumping to conclusions, speculation or make accusations
- Not automatically offer any physical touch as comfort. It may be anything but comforting to a child who is being abused.
- Avoid admonishing the child for not disclosing sooner. Saying things such as ‘I do wish you had told me about it when it started’ may be the staff member’s way of being

supportive but may be interpreted by the child to mean they have done something wrong.

- Tell the child what will happen next.

If a pupil talks to any member of staff about any risks to their safety or wellbeing the staff member will let the child know that they will have to pass the information on – staff are not allowed to keep secrets.

The member of staff should write up their conversation as soon as possible on the Expression of Concern form in the child's own words. Staff should make this a matter of priority. The record should be signed and dated, the member of staff's name should be printed and it should also detail where the disclosure was made and who else was present. The record should be handed to the DSL.

Notifying Parents

The School will normally seek to discuss any concerns about a pupil with their parents. This must be handled sensitively and normally the DSL/DDSL will make contact with the parent in the event of a concern, suspicion or disclosure.

However, if the school believes that notifying parents could increase the risk to the child or exacerbate the problem, advice will first be sought from Children's Front Door e.g. familial sexual abuse.

Where there are concerns about forced marriage or honour based abuse parents should not be informed a referral is being made as to do so may place the child at a significantly increased risk. In some circumstances it would be appropriate to contact the police.

Making a referral

- Concerns about a child or a disclosure should be immediately raised with the DSL who will help decide whether a referral to MASH or other support is appropriate in accordance with Devon Children and Families Partnership Level of Need Tool.
- If a referral is needed then the DSL should make this rapidly. However, anyone can make a referral and if for any reason a staff member thinks a referral is appropriate and one hasn't been made they can and should consider making a referral themselves.
- The child (subject to their age and understanding) and the parents will be told that a referral is being made, unless to do so would increase the risk to the child.
- If after a referral the child's situation does not appear to be improving the DSL (or the person that made the referral) should press for re-consideration to ensure their concerns have been addressed, and most importantly the child's situation improves.
- If a child is in immediate danger or is at risk of harm a referral should be made to Children's Front Door and/or the police immediately. Anybody can make a referral.
- Where referrals are not made by the DSL, the DSL should be informed as soon as possible.

Supporting Our Staff

- We recognise that staff working in the school who have become involved with a child who has suffered harm, or appears to be likely to suffer harm may find the situation stressful and upsetting.
- We will support such staff by providing an opportunity to talk through their anxieties with the DSLs and to seek further support as appropriate.

9. Choristers

This policy applies when a chorister is under the school's responsibility. The Dean and Chapter has adopted the Exeter Diocesan Safeguarding Policy including a special section on the Choir which applies when choristers are in the cathedral in the course of their duties or involved in cathedral duties elsewhere including when singing away or on tour.

The school's governing body and the Dean and Chapter will have up-to-date copies of their respective Safeguarding policies and will ensure they are reviewed annually. Each of the Named Safeguarding Leads will be responsible for holding copies of the current policies of the other body. It is crucial that the two organisations work closely together to ensure that the children's safety and welfare does not fall between the two organisations.

Chorister welfare meetings are held weekly and attended by the Cathedral Director of Music, the Cathedral Assistant Director of Music, the Precentor, The Cathedral Organ Scholar, The Lead Chaperone, the School's Chorister Tutors, the School's Designated Safeguarding Lead, and sometimes the Headmaster.

The Passing of Responsibility

Mornings: Monday–Friday: Choristers go straight to the Cathedral where they are registered by the Director and Assistant Director of Music. The School also takes a register at school registration time (8.40am). At the end of morning practice choristers are escorted to School by the Director of Music and/or the Assistant Director of Music.

Evenings: Monday–Friday: The chorister tutor takes a register, any changes from the morning register are passed on to the Director of Music. The choristers will be escorted from school to the song schools by the Director of Music. There will be a chaperone present during the rehearsal and service. When singing duties are completed the choristers are brought back to school and signed out from school by the Director of Music.

Weekends: The choristers are signed in at the cathedral by parents with the choir chaperone. Parents collect the choristers at the end of the rehearsal or service from the same location. There is always a member of staff on duty during rehearsals and services for the chaperone to report to in case of illness or any other issue with a member of the choir. A choir chaperone is available for welfare duties during rehearsals and at service times. Choristers are collected and signed out after their duties by the chaperone.

10. Children who are particularly vulnerable

Exeter Cathedral School recognises that some children are more vulnerable to neglect, abuse, and exploitation, including peer-on-peer abuse and that additional barriers exist when recognising abuse for some children.

In some cases possible indicators of abuse such as a child's mood, behaviour or injury might be assumed to relate to the child's impairment or disability rather than giving a cause for concern. Or a focus may be on the child's disability, special educational needs or situation without

consideration of the full picture. In other cases, such as bullying, the child may be disproportionately impacted by the behaviour without outwardly showing any signs that they are experiencing it.

Some children may also find it harder to disclose abuse due to communication barriers, lack of access to a trusted adult or not being aware that what they are experiencing is abuse.

Any child may benefit from early help, but all school and college staff should be particularly alert to the potential need for early help for a child who:

- is disabled and has specific additional needs;
- has special educational needs (whether or not they have a statutory education, health and care plan);
- is a young carer;
- is showing signs of being drawn in to anti-social or criminal behaviour, including gang involvement and association with organised crime groups;
- is frequently missing/goes missing from education, home or care.
- has experienced multiple suspensions;
- has a parent or carer in custody or is affected by parental offending;
- is misusing drugs or alcohol themselves;
- is at risk of modern slavery, trafficking or exploitation;
- is in a family circumstance presenting challenges for the child, such as substance abuse, adult mental health problems or domestic abuse;
- has returned home to their family from care;
- is showing early signs of abuse and/or neglect and/or exploitation
- is at risk of being radicalised or exploited;
- is a privately fostered child;
- has an imprisoned parent.
- is experiencing mental health, wellbeing difficulties;
- is persistently absent from education (including persistently absent for part of the school day);
- is at risk of ‘honour’ based abuse such as FGM or Forced Marriage
- LGBTQ+, Gender questioning and gender diverse children.

11. Children who are lesbian, gay, bi, trans, queer or gender questioning (LGBTQ+)

The fact that a child may be LGBTQ+ is not in itself an inherent risk factor for harm. However, children who are LGBTQ+ can be targeted by other children. In some cases, a child who is perceived by other children to be LGBTQ+ (whether they are or not) can be just as vulnerable as children who identify as LGBTQ+

Risks can be compounded where children who are LGBTQ+ lack a trusted adult with whom they can be open. We will speak regularly to pupils about who to speak to in school and how to do this.

LGBT inclusion is part of Relationships and Sex Education and is taught through PSHE lessons.

Pupil Voice is actively encouraged and Diversity is championed. A Head of Pupil Voice & Diversity is appointed.

We will exercise caution because of the many unknowns about the impact of social transitioning. We will consider the broad range of needs that the pupil may have. This will be done in partnership with parents, other than the exceptionally rare circumstances where involving parents would constitute a significant risk of harm to the child.

12. Anti-Bullying/Cyberbullying

Our school policy on anti-bullying is set out in a separate document and acknowledges that to allow or condone bullying may lead to consideration under child protection procedures. This includes all forms e.g. cyber, racist, homophobic and gender related bullying. We keep a record of known bullying incidents which is shared with and analysed by the governing body. All staff are aware that children with SEND and/or differences/perceived differences are more susceptible to being bullied/victims of abuse.

If the bullying is particularly serious, or the anti-bullying procedures are seen to be ineffective, the headteacher and the DSL will consider implementing child protection procedures.

The subject of bullying is addressed at regular intervals in PHSE education.

13. Bullying, Prejudice and Racist Incidents

Repeated racist incidents or a single serious incident may lead to consideration under child protection procedures. We keep a record of racist incidents and report them to the Local Authority.

14. Radicalisation and Extremism

The Prevent Duty for England and Wales (2023) under section 26 of the Counter-Terrorism and Security Act 2015 places a duty on education and other children's services to have due regard to the need to prevent people from being drawn into terrorism.

Extremism is defined as 'as 'vocal or active opposition to fundamental British values, including democracy, the rule of law, individual liberty and mutual respect and tolerance of different faiths and beliefs'. We also include in our definition of extremism calls for the death of members of our armed forces, whether in this country or overseas.

Some children are at risk of being radicalised; adopting beliefs and engaging in activities which are harmful, criminal or dangerous.

Exeter Cathedral School is clear that exploitation of vulnerable children and radicalisation should be viewed as a safeguarding concern and follows the Department for Education guidance for schools and childcare providers on preventing children and young people from being drawn into terrorism⁵.

Exeter Cathedral School seeks to protect children and young people against the messages of all violent extremism including, but not restricted to, those linked to Islamist ideology, or the Far Right / Neo Nazi / White Supremacist ideology, Irish Nationalist and Loyalist paramilitary groups, and extremist Animal Rights movements.

⁵ [The Prevent duty](#)

School staff receive training to help identify early signs of radicalisation and extremism. Indicators of vulnerability to radicalisation are in detailed in Appendix 7.

Opportunities are provided in the curriculum to enable pupils to discuss issues of religion, ethnicity and culture and the school follows the DfE advice Promoting Fundamental British Values as part of SMSC (spiritual, moral, social and cultural education) in Schools (2014)⁶.

The school governors, the Head Teacher and the DSL will assess the level of risk within the school and put actions in place to reduce that risk. Risk assessment may include, the use of school premises by external agencies, anti-bullying policy and other issues specific to the school's profile, community and philosophy.

When any member of staff has concerns that a pupil may be at risk of radicalisation or involvement in terrorism, they should speak with the DSL. They should then follow normal safeguarding procedures. If the matter is urgent then Devon & Cornwall Police must be contacted by dialling 999. In non-urgent cases where police advice is sought then dial 101. The Department of Education has also set up a dedicated telephone helpline for staff and governors to raise concerns around Prevent (020 7340 7264).

15. Domestic Abuse (incl Operation Encompass)

Domestic abuse represents one quarter of all violent crime. It is actual or threatened physical, emotional, psychological or sexual abuse. It involves the use of power and control by one person over another. It occurs regardless of race, ethnicity, gender, class, sexuality, age, religion, mental or physical ability. Domestic abuse can also involve other types of abuse.

Domestic abuse can encompass a wide range of behaviours and may be a single incident or a pattern of incidents. That abuse can be, but is not limited to, psychological, physical, sexual, financial or emotional.

Children can be victims of domestic abuse. They may see, hear, or experience the effects of abuse at home and/or suffer domestic abuse in their own intimate relationships (teenage relationship abuse). All of which can have a detrimental and long-term impact on their health, well-being, development, and ability to learn. (See Appendix 6).

Operation Encompass

Operation Encompass helps police and schools work together to provide emotional and practical help for children. Police will inform the DSL/DDSL within school if they have been called to an incident of domestic abuse, where there are children in the household before registration the next day.

16. Child Sexual Exploitation (CSE), Child Criminal Exploitation (CCE) and County Lines

Both CSE and CCE are forms of abuse and both occur where an individual or group takes advantage of an imbalance in power to coerce, manipulate or deceive a child into sexual or criminal activity. This power imbalance could be due to age, gender, sexual identity, cognitive ability, physical strength, status, and /or access to economic or other resources. The abuse could be linked to an exchange for something the victim perceives that they need or want and/or will be to the financial benefit or other advantage (such as increase status) of the perpetrator or facilitator.

⁶ [Promoting Fundamental British Values](#)

The abuse can be perpetrated by individuals or groups, males or females, and children or adults (who themselves may be experiencing exploitation). The abuse can be a one-off occurrence or a series of incidents over time and range from opportunistic to complex organised abuse. It may involve force and/or enticement-based methods of compliance and may, or may not, be accompanied by violence or threats of violence.

Victims can be exploited even when the activity appears consensual and it should be noted exploitation as well as being physical can be facilitated and/or take place online. The experience of girls who are criminally exploited can be very different from boys, the indicators may not be the same and both boys and girls that are being criminally exploited may be at higher risk of sexual exploitation.

CSE can occur over time or be a one-off occurrence. CSE can affect any child, who has been coerced into engaging in sexual activities. This includes 16 and 17 year olds who can legally consent to have sex.

More definitions and indicators are included in Appendix 4.

Child sexual exploitation is a form of child sexual abuse. It occurs where an individual or group takes advantage of an imbalance of power to coerce, manipulate or deceive a child or young person under the age of 18 into sexual activity (a) in exchange for something the victim needs or wants, and/or (b) for the financial advantage or increased status of the perpetrator or facilitator.

The victim may have been sexually exploited even if the sexual activity appears consensual. Child sexual exploitation does not always involve physical contact, it can also occur through the use of technology. More information and the indicators of CSE is set out in appendix 3. CSE can happen online and offline and all staff should be aware of the link between online safety and vulnerability to CSE.

Any concerns that a child is being or is at risk of being sexually exploited should be passed without delay to the DSL. We are aware there is a clear link between regular school absence/truancy and CSE and CCE. Staff should consider a child to be at potential CSE/CCE risk in the case of regular school absence/truancy and make reasonable enquiries with the child and parents to assess this risk.

The DSL will use the Devon Children and Families Partnership Adolescent Safety Framework Safer Me Assessment⁷ on all occasions when there is a concern that a child is being or is at risk of being sexually or criminally exploited or where indicators have been observed that are consistent with a child who is being or who is at risk of being sexually or criminally exploited. The Safer Me Assessment will indicate to the DSL whether a Safer Me Early Help approach or referral to the Exploitation Hub is required. If the DSL is in any doubt they will contact MASH consultation.

In all cases if the assessment identified any level of concern the DSL should contact their local MACE⁸ (Missing & Child Exploitation) and email the completed Safer Me assessment along with a Children's Front Door enquiry form. If a child is in immediate danger the police should be called on 999.

⁷ [DCFP Adolescent Safety Framework info and Safer Me Assessment](#)

⁸ [DCFP MACE guidance](#)

We are aware that a child often is not able to recognise the coercive nature of the abuse and does not see themselves as a victim. As a consequence, the child may resent what they perceive as interference by staff. However, staff must act on their concerns as they would for any other type of abuse.

17. Female Genital Mutilation (FGM)

Female Genital Mutilation (FGM) is illegal in England and Wales under the FGM Act (2003). It is a form of child abuse and violence against women. A mandatory reporting duty requires teachers to report ‘known’ cases of FGM in under 18s, which are identified in the course of their professional work, to the police⁹.

The duty applies to all persons who are employed or engaged to carry out ‘teaching work’ in the school, whether or not they have qualified teacher status. The duty applies to the individual who becomes aware of the case to make a report. It should not be transferred to the Designated Safeguarding Lead, however the DSL should be informed.

If a teacher is informed by a girl under 18 that an act of FGM has been carried out on her or a teacher observes physical signs which appear to show that an act of FGM has been carried out on a girl under 18 and they have no reason to believe the act was necessary for the girl’s physical or mental health or for purposes connected with labour or birth, the teacher should personally make a report to the police force in which the girl resides by calling 101. The report should be made by the close of the next working day.

School staff are trained to be aware of risk indicators of FGM which are set out in Appendix 5. Concerns about FGM outside of the mandatory reporting duty should be reported as per our child protection procedures. Staff should be particularly alert to suspicions or concerns expressed by female pupils about going on a long holiday during the summer vacation period. There should also be consideration of potential risk to other girls in the family and practicing community.

Where there is a risk to life or likelihood of serious immediate harm the teacher should report the case immediately to the police, including dialling 999 if appropriate.

There are no circumstances in which a teacher or other member of staff should examine a girl.

18. Forced Marriage

A forced marriage is a marriage in which one or both people do not (or in cases of people with learning disabilities cannot) consent to the marriage but are coerced into it. Coercion may include physical, psychological, financial, sexual and emotional pressure. It may also involve physical or sexual violence and abuse.

Forced marriage is recognised in the UK as a form of violence against women and men, domestic/child abuse and a serious abuse of human rights. Since June 2014 forcing someone to marry has become a criminal offence in England and Wales under the Anti-Social Behaviour, Crime and Policing Act 2014.

School staff should never attempt to intervene directly as a school or through a third party. Contact should be made with Children’s Front Door.

19. Honour-based Abuse

⁹ [FGM procedural information](#)

Honour based Abuse can be described as a collection of practices, which are used to control behaviour within families or other social groups to protect perceived cultural and religious beliefs and/or honour. Such violence can occur when perpetrators perceive that a relative has shamed the family and/or community by breaking their honour code.

It is a violation of human rights and may be a form of domestic and/or sexual abuse. There is no, and cannot be, honour or justification for abusing the human rights of others.

20. One Chance Rule

All staff are aware of the ‘One Chance’ Rule’ in relation to forced marriage, FGM and HBV. Staff recognise they may only have one chance’ to speak to a pupil who is a potential victim and have just one chance to save a life.

We are aware that if the victim is not offered support following disclosure that the ‘One Chance’ opportunity may be lost. Therefore, all staff are aware of their responsibilities and obligations when they become aware of potential forced marriage, FGM and HBV cases.

21. Mental Health

Staff will be aware that mental health problems can, in some cases, be an indicator that a child has suffered or is at risk of suffering abuse, neglect or exploitation. Whilst school recognise that only appropriately trained professionals can diagnose mental health problems; staff are able to make day to day observations of children and identify such behaviour that may suggest they are experiencing a mental health problem or be at risk of developing one.

How traumatic adverse childhood experiences of abuse and neglect can impact on a child’s mental health, behaviour and education through to adolescence and adulthood will be covered in safeguarding awareness training and updates. If staff have a mental health concern about a child that is also a safeguarding concern they will share this with the DSL or deputy. School will also refer to the mental health and behaviour in schools guidance¹⁰

22. Private Fostering Arrangements

A private fostering arrangement occurs when someone other than a parent or close relative cares for a child for a period of 28 days or more, with the agreement of the child’s parents. It applies to children under the age of 16 or 18 if the child is disabled. Children looked after by the local authority or who are placed in residential schools, children’s homes or hospitals are not considered to be privately fostered.

We recognise that most privately fostered children remain safe and well but are aware that safeguarding concerns have been raised in some cases. Therefore, all staff are alert to possible safeguarding issues, including the possibility that the child has been trafficked into the country.

By law, a parent, private foster carer or other persons involved in making a private fostering arrangement must notify children’s services as soon as possible. However, where a member of

¹⁰ [Mental health and behaviour in schools: guidance](#)

staff becomes aware that a pupil may be in a private fostering arrangement they will raise this with the DSL and the DSL will notify Children's Front Door of the circumstances.

23. Looked after children and previously looked after children

The most common reason for children becoming looked after is as a result of abuse and neglect. We ensure that staff have the necessary skills and understanding to keep looked after/previously looked after children safe. Appropriate staff have information about a child's looked after legal status and care arrangements, including the level of authority delegated to the carer by the authority looking after the child and contact arrangements with birth parents or those with parental responsibility.

The designated teacher for looked after children (the DSL) has details of the child's social worker and the name and contact details of the Devon County Council's virtual school head for children in care, children with a social worker and those in kinship care. (Extended role from September 2025).

The designated teacher for looked after children works with the virtual school head to discuss how Pupil Premium Plus funding can be best used to support the progress of looked after children in the school and meet the needs in the child's personal education plan. The designated teacher will follow the statutory guidance 'Promoting the education of Looked After Children'.

24. Children Missing Education

Attendance, absence and exclusions are closely monitored. The school will hold more than one emergency contact number for pupils and students where reasonably possible. A child being absent or missing from education, including unexplainable and or/persistent absences from education, is a potential indicator of abuse, neglect and exploitation, including sexual abuse and sexual exploitation.

The DSL will monitor unauthorised absences and take appropriate action including notifying the local authority particularly where children go missing on repeat occasions and/or are missing for periods during the school day in conjunction with 'Children Missing Education: Statutory Guidance for Local Authorities'¹¹.

Staff must be alert to signs of children at risk of travelling to conflict zones, female genital mutilation and forced marriage.

25. Online Safety

Our pupils increasingly use electronic equipment on a daily basis to access the internet and share content and images via social media sites such as Facebook, twitter, Instagram and Snapchat.

Unfortunately, some adults and other children use these technologies to harm children. The harm might range from sending hurtful or abusive texts or emails, to grooming and enticing children to engage in sexual behaviour such as webcam photography or face-to-face meetings. Pupils may also be distressed or harmed by accessing inappropriate material such as pornographic websites or those which promote extremist behaviour, criminal activity, suicide or eating disorders. Pupils will understand the negative impact of misinformation, disinformation and conspiracy theories when learning about online safety risks.

AI and technology

¹¹ [CME Statutory Guidance for Local Authorities](#)

1. Legal and Ethical Responsibilities

Schools must ensure that AI and technology use complies with existing safeguarding frameworks, including:

- Keeping Children Safe in Education (KCSIE) statutory guidance 1
- UK GDPR and Data Protection Act 2018
- Children’s Online Privacy Protection and age-appropriate design codes
- [Plan technology for your school - GOV.UK](#)
- [AI Cyber Security Code of Practice - GOV.UK](#)

2. AI Use by Staff

Staff are permitted to use AI for tasks like lesson planning, marking, and admin. However, they must verify AI-generated content and ensure it is appropriate and accurate.

Final responsibility for safeguarding and educational content always lies with the teacher and school leadership.

3. AI Use by Pupils

Schools can decide whether pupils may use AI tools, but must:

- Enforce age restrictions (many AI tools are 18+)
- Ensure close supervision
- Use tools with built-in safety and filtering features

4. Data Security and Privacy

Schools must manage data security risks associated with AI and cloud-based tools.

The National Cyber Security Centre (NCSC) provides guidance on:

- Cloud security
- Cyber defence
- Device safeguarding (filtering and monitoring)

<https://www.ncsc.gov.uk/>

5. Policy and Oversight

While there is no single formal AI framework yet, the Department for Education (DfE) encourages schools to:

- Use AI ethically and cautiously
- Align AI use with existing safeguarding and data protection policies
- Develop internal policies for AI use, including acceptable use agreements and staff training

Exeter Cathedral School will also provide advice to parents when pupils are being asked to learn online at home and consider how best to safeguard both pupils and staff.

Appropriate filtering, monitoring and reporting of technology on school devices and school networks is in place, using Smoothwall. Our external IT support contractor is SoftEgg. Alerts are sent to the school's online safety lead (DSL) and online safety coordinator.

Pupils are taught about online safety throughout the curriculum and all staff receive online safety training which is regularly updated. The school has a Head of Online Safety, who is a DDSL and an Online Safety Lead, who is the Deputy Head (pupils) and Designated Safeguarding Lead.

26. Peer on peer Child on Child Abuse incl Sexual violence and sexual harassment

The DSL, Governing Body/Board and Head Teacher will take due regard to Part 5, KCSiE

In most instances, the conduct of pupils towards each other will be covered by our behaviour policy. However, some allegations may be of such a serious nature that they may raise safeguarding concerns. The school recognise that children are capable of abusing their peers. It will not be passed off as 'banter' or 'part of growing up'. The forms of child on child abuse are outlined below.

- Domestic abuse – an incident or pattern of actual or threatened acts of physical, sexual, financial and/or emotional abuse, perpetrated by an adolescent against a current or former dating partner regardless of gender or sexuality.
- Bullying (including cyberbullying, prejudice-based and discriminatory bullying);
- Child Sexual Exploitation – children under the age of 18 may be sexually abused in the context of exploitative relationships, contexts and situations by peers who are also under 18.
- Harmful Sexual Behaviour – Children and young people presenting with sexual behaviours that are outside of developmentally 'normative' parameters and harmful to themselves and others (For more information, please see Appendix 3).
- Upskirting – which typically involves taking a picture under a person's clothing without them knowing, with the intention of viewing their genital or buttocks to obtain sexual gratification, or cause the victim humiliation, distress or alarm.
- serious youth violence¹² – Any offence of most serious violence or weapon enabled crime, where the victim is aged 0-19' i.e. murder, manslaughter, rape, wounding with intent and causing grievous bodily harm. 'Youth violence' is defined in the same way, but also includes assault with injury offences. All staff will receive training so that they are aware of indicators which may signal that children are at risk from, or involved with serious violence and crime.
- initiation/hazing type violence and rituals (this could include activities involving harassment, abuse or humiliation used as a way of initiating a person into a group and may also include an online element); and
- consensual and non-consensual sharing of nudes and semi nudes images and or videos (also known as sexting or youth produced sexual imagery).

The term child on child abuse can refer to all of these definitions and a child may experience one or multiple facets of abuse at any one time. It should also be noted that abuse can take place

¹² [Preventing youth violence and gang involvement](#)

wholly online or technology may be used to facilitate offline abuse. Therefore, our response will cut across these definitions and capture the complex web of their experiences.

There are also different gender issues that can be prevalent when dealing with peer on peer abuse (i.e. girls being sexually touched/assaulted or boys being subjected to initiation/hazing type violence).

Sexual violence

School staff are aware of sexual violence and the fact children can, and sometimes do, abuse their peers in this way. When referring to sexual violence we are referring to sexual offences under the Sexual Offences Act 2003 as described below:

Rape: A person (A) commits an offence of rape if: he intentionally penetrates the vagina, anus or mouth of another person (B) with his penis, B does not consent to the penetration and A does not reasonably believe that B consents.

Assault by Penetration: A person (A) commits an offence if: s/he intentionally penetrates the vagina or anus of another person (B) with a part of her/his body or anything else, the penetration is sexual, B does not consent to the penetration and A does not reasonably believe that B consents.

Sexual Assault: A person (A) commits an offence of sexual assault if: s/he intentionally touches another person (B), the touching is sexual, B does not consent to the touching and A does not reasonably believe that B consents.

Consent is about having the freedom and capacity to choose. Consent to sexual activity may be given to one sort of sexual activity but not another, e.g. to vaginal but not anal sex or penetration with conditions, such as wearing a condom. Consent can be withdrawn at any time during sexual activity and each time activity occurs. Someone consents to vaginal, anal or oral penetration only if s/he agrees by choice to that penetration and has the freedom and capacity to make that choice.

Sexual harassment

When referring to sexual harassment we mean ‘unwanted conduct of a sexual nature’ that can occur online and offline. When we reference sexual harassment, we do so in the context of child on child sexual harassment. Sexual harassment is likely to: violate a child’s dignity, and/or make them feel intimidated, degraded or humiliated and/or create a hostile, offensive or sexualised environment.

Whilst not intended to be an exhaustive list, sexual harassment can include:

sexual comments, such as: telling sexual stories, making lewd comments, making sexual remarks about clothes and appearance and calling someone sexualised names; sexual “jokes” or taunting; physical behaviour, such as: deliberately brushing against someone, interfering with someone’s clothes (schools and colleges should be considering when any of this crosses a line into sexual violence - it is important to talk to and consider the experience of the victim) and displaying pictures, photos or drawings of a sexual nature; and online sexual harassment. This may be standalone, or part of a wider pattern of sexual harassment and/or sexual violence.

It may include:

non-consensual sharing of sexual images and videos; sexualised online bullying; unwanted sexual comments and messages, including, on social media; and sexual exploitation; coercion and threats

The school aims to reduce the likelihood of child on child abuse through;

- the established ethos of respect, friendship, courtesy and kindness;
- high expectations of behaviour;
- clear consequences for unacceptable behaviour;
- providing a developmentally appropriate PSHE curriculum which develops pupils' understanding of healthy relationships, acceptable behaviour, consent and keeping themselves safe;
- systems for any pupil to raise concerns with staff, knowing that they will be listened to, valued and believed;
- robust risk assessments and providing targeted work for pupils identified as being a potential risk to other pupils and those identified as being at risk.

Research indicates that young people rarely disclose child on child abuse and that if they do, it is likely to be to their friends. Therefore, Exeter Cathedral School will also educate pupils in how to support their friends if they are concerned about them, that they should talk to a trusted adult in the school and what services they can contact for further advice.

Any concerns, disclosures or allegations of child on child abuse in any form should be referred to the DSL using Exeter Cathedral School's child protection procedures as set out in this policy. Where a concern regarding peer on peer abuse has been disclosed to the DSL(s), advice and guidance will be sought from Children's Front Door and where it is clear a crime has been committed or there is a risk of crime being committed the Police will be contacted.

Staff are trained in how to respond appropriately to a report of sexual violence or sexual harassment. They understand that the initial response is important. Staff will reassure the victim that they are being taken seriously and that they will be supported and kept safe. A victim should never be made to feel that they are creating a problem or be made to feel ashamed. It is important to explain that the law is in place to protect children rather than criminalise them, and this should be explained in such a way that avoids alarming or distressing them. If staff have a concern or a child makes a report to them they should follow the referral process as set down in this policy.

Working with external agencies the school will respond to the unacceptable behaviour. If a pupil's behaviour negatively impacts on the safety and welfare of other pupils then safeguards will be put in place to promote the well-being of the pupils affected and the victim and perpetrator will be provided with support. Intra-familial harms will also be considered and if necessary support for siblings will be put in place.

One Minute Guide; <https://www.devon.gov.uk/support-schools-settings/safeguarding/guidance-policy-and-tools-2/safeguarding-one-minute-guides/safeguarding-no-14-peer-on-peer-abuse/>

27. Youth produced sexual imagery (sexting)¹³

¹³ Youth refers to anyone under the age of 18

The practice of children sharing images and videos via text message, email, social media or mobile messaging apps has become commonplace. However, this online technology has also given children the opportunity to produce and distribute sexual imagery in the form of photos and videos. Such imagery involving anyone under the age of 18 is illegal.

Youth produced sexual imagery refers to both images and videos where;

- A person under the age of 18 creates and shares sexual imagery of themselves with a peer under the age of 18.
- A person under the age of 18 shares sexual imagery created by another person under the age of 18 with a peer under the age of 18 or an adult.
- A person under the age of 18 is in possession of sexual imagery created by another person under the age of 18.

All incidents of this nature should be treated as a safeguarding concern and in line with the UKCCIS guidance ‘Sexting in schools and colleges: responding to incidents and safeguarding young people’¹⁴ and the government guidance contained in ‘Sharing nudes and semi-nudes: how to respond to an incident.’¹⁵

Cases where sexual imagery of people under 18 has been shared by adults and where sexual imagery of a person of any age has been shared by an adult to a child is child sexual abuse and should be responded to accordingly.

If a member of staff becomes aware of an incident involving youth produced sexual imagery they should follow the child protection procedures and refer to the DSL as soon as possible. The member of staff should confiscate the device involved and set it to flight mode or, if this is not possible, turn it off. Staff should not view, copy or print the youth produced sexual imagery.

The DSL should hold an initial review meeting with appropriate school staff and subsequent interviews with the children involved (if appropriate). Parents should be informed at an early stage and involved in the process unless there is reason to believe that involving parents would put the child at risk of harm. At any point in the process if there is concern a young person has been harmed or is at risk of harm a referral should be made to Children’s Services or the Police as appropriate.

Immediate referral at the initial review stage should be made to MASH/Police if;

- The incident involves an adult;
- There is good reason to believe that a young person has been coerced, blackmailed or groomed or if there are concerns about their capacity to consent (for example, owing to special education needs);
- What you know about the imagery suggests the content depicts sexual acts which are unusual for the child’s development stage or are violent;
- The imagery involves sexual acts;
- The imagery involves anyone aged 12 or under;
- There is reason to believe a child is at immediate risk of harm owing to the sharing of the imagery, for example the child is presenting as suicidal or self-harming.

¹⁴ [Sexting in schools and colleges](#)

¹⁵ [Sharing nudes and semi-nudes: how to respond to an incident \(UCKIS\)](#)

If none of the above apply then the DSL will use their professional judgement to assess the risk to pupils involved and may decide, with input from the Headteacher, to respond to the incident without escalation to or the police. Such decisions will be recorded.

In applying judgement the DSL will consider if;

- there is a significant age difference between the sender/receiver.
- there is any coercion or encouragement beyond the sender/receiver;
- the imagery was shared and received with the knowledge of the child in the imagery;
- the child is more vulnerable than usual i.e. at risk;
- there is a significant impact on the children involved;
- the image is of a severe or extreme nature;
- the child involved understands consent;
- the situation is isolated or if the image been more widely distributed;
- there other circumstances relating to either the sender or recipient that may add cause for concern i.e. difficult home circumstances;
- the children have been involved in incidents relating to youth produced imagery before.

If any of these circumstances are present the situation will be escalated according to our child protection procedures, including reporting to the police or Children’s Services. Otherwise, the situation will be managed within the school.

The DSL will record all incidents of youth produced sexual imagery, including both the actions taken, actions not taken, reasons for doing so and the resolution in line with safeguarding recording procedures.

28. Allegations against staff

All school staff should take care not to place themselves in a vulnerable position with a child. It is always advisable for interviews or work with individual children or parents to be conducted in view of other adults.

Guidance about conduct and safe practice, including safe use of mobile phones by staff and volunteers will be given at induction¹⁶.

We understand that a pupil may make an allegation against a member of staff, the DSL or a volunteer in school. Staff may have concerns about another staff member (to include the DSL and volunteers).

If such an allegation is made, or information is received which suggests that a person may be unsuitable to work with children, the member of staff receiving the allegation or aware of the information, will immediately inform the Headteacher¹⁷.

The Headteacher on all such occasions will discuss the content of the allegation with the Local Authority Designated Officer (LADO)¹⁸ at the earliest opportunity and before taking any further action.

¹⁶ Refer to “Guidance for Safe Working Practice”

¹⁷ Chair of Governors in the event of an allegation against the Headteacher

¹⁸ Duty LADO 01392 384964 or email ladosecure-mailbox@devon.gov.uk

If the allegation made to a member of staff concerns the Headteacher, the person receiving the allegation will immediately inform the Chair of Governors who will consult the LADO as above, without notifying the Headteacher first.

The school will follow the Devon procedures for managing allegations against staff, procedures set out in Keeping Children Safe in Education 2025 and the school's Managing Allegations policy and procedures.

Suspension of the member of staff, excluding the Headteacher, against whom an allegation has been made, needs careful consideration, and the Headteacher will seek the advice of the LADO and an HR Consultant in making this decision.

If an investigation leads to the dismissal or resignation prior to dismissal of a member of teaching staff specifically, the school will consider making a referral to the Teaching Regulation Agency ("TRA") and a prohibition order may be appropriate (because that teacher has displayed unacceptable professional conduct, conduct that may bring the profession into disrepute or a conviction at any time for a relevant offence).

In the event of an allegation against the Headteacher, the decision to suspend will be made by the Chair of Governors with advice as above.

We have a procedure for managing the suspension of a contract for a community user in the event of an allegation arising in that context.

Staff, parents and governors are reminded that publication of material that may lead to the identification of a teacher who is the subject of an allegation is prohibited by law. Publication includes verbal conversations or writing including content placed on social media sites.

In addition, our Low-Level Concern Policy enables all staff to share any concerns – **no matter how small** – about their own or another member of staff's behaviour with the Headmaster or the Deputy Heads (Pupils).

School will ensure that pupils are aware of how they can raise a concern should they be worried about a member of staff's conduct, this may be for example by talking to a trusted adult, or anonymously using the worry jars.

29. Whistle-blowing

All staff should be aware of their duty to raise concerns, where they exist, about the management of child protection, which may include the attitude or actions of colleagues, poor or unsafe practice and potential failures in the school's safeguarding arrangements. If it becomes necessary to consult outside the school, they should speak in the first instance, to the LADO following the Whistleblowing Policy.

The NSPCC whistleblowing helpline is available for staff who do not feel able to raise concerns regarding child protection failures internally. Staff can call: 0800 028 0285 line is available from 8:00 AM to 8:00 PM, Monday to Friday and email: help@nspcc.org.uk

Whistle-blowing re the Headteacher should be made to the Chair of the Governing Body whose contact details are readily available to staff (as pertinent to setting).

30. Physical Intervention

We acknowledge that staff must only ever use physical intervention as a last resort, when a child is endangering him/herself or others, and that at all times it must be the minimal force necessary to prevent injury to another person.

Such events should be recorded and signed by a witness (Prep records held by DSL and Pre Prep record held by Head of Pre Prep.)

Staff who are likely to need to use physical intervention will be appropriately trained.

We understand that physical intervention of a nature which causes injury or distress to a child may be considered under child protection or disciplinary procedures.

31. Use of mobile technology

The School's policy on the use of mobile technology, including phones and cameras, in the School, is as follows:

- the School's Acceptable Use Policy for pupils sets out the expectations on pupils. In short, only pupils in Upper Years may bring phones in to school. All mobile phones should be left in the mobile phone box at the start of the school day and collected at the end of the school day. Mobile phones cannot be used whilst pupils are on school premises;
- all staff (including staff in the EYFS setting) should use mobile devices and cameras in accordance with the guidance set out in the Bring Your Own Device (BYOD) and Acceptable Use of ICT Policy for Staff and Visitors (including in EYFS) and the Acceptable Use of Mobile Devices in the EYFS;
- Staff in the EYFS should not use their mobile phone at any point whilst in the presence of the children on the school premises. Mobile devices must be left out of reach within the setting and should be stored in the lockers in Hall House, in the Pre-Prep Office or the Nursery Office. Staff may use their phones in the staff-only areas, and during their breaks when not with the children. Some staff may need to phone their team for example to call for supplies; staff must keep their phone in their pocket and only use it when absolutely necessary and when they are away from the children as far as is reasonably possible (ie in a staff-only area or outside whilst the children are inside)
- parents of all pupils (including parents of pupils in the EYFS setting) may bring mobile devices onto the premises but may only take photographs during events such as plays, concerts or sporting events for personal use. Parents should be reminded that the publication of such images (including on personal social networking sites even where access to the image may be limited) may be unlawful.

32. Confidentiality, sharing information and GDPR

All staff will understand that child protection issues warrant a high level of confidentiality, not only out of respect for the pupil and staff involved but also to ensure that information being released into the public domain does not compromise evidence.

Staff should only discuss concerns with the DSL, headteacher/principal or chair of governors (depending on who is the subject of the concern). That person will then decide who else needs to have the information and they will disseminate it on a 'need-to-know' basis.

However, following a number of cases where senior leaders in school had failed to act upon concerns raised by staff, Keeping Children Safe in Education (2025) emphasises that any member of staff can contact children’s social care if they are concerned about a child.

Child protection information will be stored and handled in line with the Data Protection Act 2018 and HM Government Information Sharing and Advice for practitioners providing safeguarding services to children, young people, parents and carers, July 2018

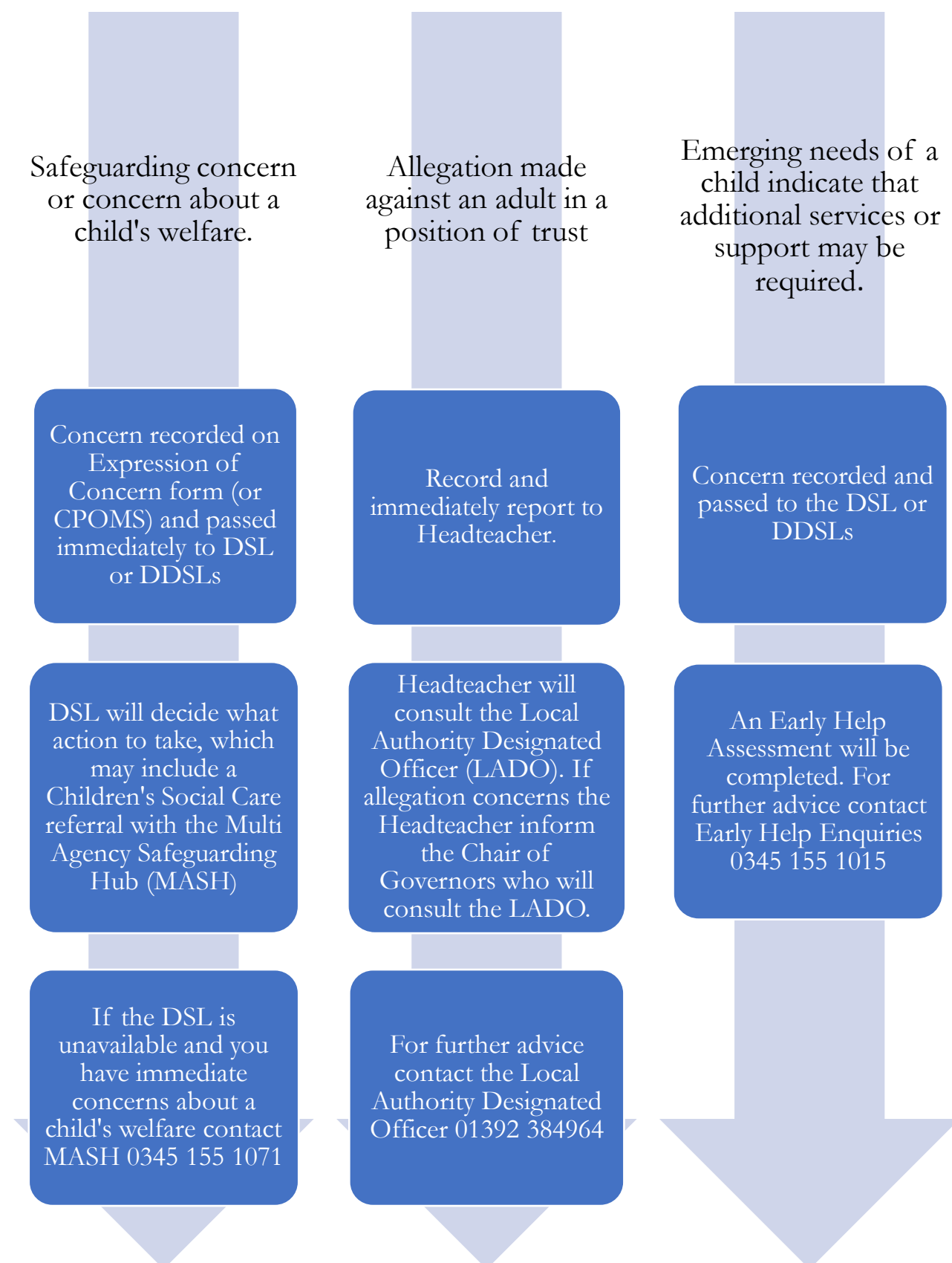
Fears about sharing information cannot be allowed to stand in the way of the need to promote the welfare and protect the safety of children.

33. This policy also links to our policies on:

- Behaviour and Discipline
- Staff Code of Conduct
- Whistleblowing
- Anti-bullying
- Health & Safety
- Allegations against staff
- Parental concerns
- Attendance
- Curriculum
- PSHE
- Administration of medicines
- Acceptable Use of ICT and Mobile Devices by Pupils
- Bring your own device (BYOD) and Acceptable Use of ICT for Staff and Visitors (including in EYFS)
- Risk Assessment
- Recruitment and Selection
- Intimate Care
- Data Protection/GDPR Guidance
- Low Level Concerns
- Physical Intervention Policy
- Acceptable Use of Mobile Devices in the EYFS

Appendix 1

Exeter Cathedral School Safeguarding Flowchart



Appendix 2

Recognising signs of child abuse

Categories of Abuse:

- Physical Abuse
- Emotional Abuse (including Domestic Abuse)
- Sexual Abuse (including child sexual exploitation)
- Neglect

Signs of Abuse in Children:

The following non-specific signs may indicate something is wrong:

- Significant change in behaviour
- Extreme anger or sadness
- Aggressive and attention-needing behaviour
- Suspicious bruises with unsatisfactory explanations
- Lack of self-esteem
- Self-injury
- Depression and/or anxiety
- Age inappropriate sexual behaviour
- Criminality
- Substance abuse
- Mental health problems
- Poor attendance

Risk Indicators

The factors described in this section are frequently found in cases of child abuse. Their presence is not proof that abuse has occurred, but:

- Must be regarded as indicators of the possibility of significant harm
- Justifies the need for careful assessment and discussion with designated / named / lead person, manager, (or in the absence of all those individuals, an experienced colleague)
- May require consultation with and / or referral to Children's Services

The absence of such indicators does not mean that abuse or neglect has not occurred.

In an abusive relationship the child may:

- Appear frightened of the parent/s
- Act in a way that is inappropriate to her/his age and development (though full account needs to be taken of different patterns of development and different ethnic groups)

The parent or carer may:

- Persistently avoid child health promotion services and treatment of the child's episodic illnesses
- Have unrealistic expectations of the child
- Frequently complain about/to the child and may fail to provide attention or praise (high criticism/low warmth environment)
- Be absent or misusing substances
- Persistently refuse to allow access on home visits
- Be involved in domestic abuse

Staff should be aware of the potential risk to children when individuals, previously known or suspected to have abused children, move into the household.

Indicators of abuse and neglect and exploitation

As stated in KCSIE all school staff should be aware that abuse, neglect, exploitation and safeguarding issues are rarely standalone events that can be covered by one definition or label. In most cases, multiple issues will overlap with one another.

Abuse: a form of maltreatment of a child. Somebody may abuse or neglect a child by inflicting harm or by failing to act to prevent harm. Children may be abused in a family or in an institutional or community setting by those known to them or, more rarely, by others. Abuse can take place wholly online, or technology may be used to facilitate offline abuse. Children may be abused by an adult or adults or by another child or children.

Physical abuse: a form of abuse which may involve hitting, shaking, throwing, poisoning, burning or scalding, drowning, suffocating or otherwise causing physical harm to a child. Physical harm may also be caused when a parent or carer fabricates the symptoms of, or deliberately induces, illness in a child.

Emotional abuse: the persistent emotional maltreatment of a child such as to cause severe and adverse effects on the child's emotional development. It may involve conveying to a child that they are worthless or unloved, inadequate, or valued only insofar as they meet the needs of another person. It may include not giving the child opportunities to express their views, deliberately silencing them or 'making fun' of what they say or how they communicate. It may feature age or developmentally inappropriate expectations being imposed on children. These may include interactions that are beyond a child's developmental capability as well as overprotection and limitation of exploration and learning, or preventing the child from participating in normal social interaction. It may involve seeing or hearing the ill-treatment of another. It may involve serious bullying (including cyberbullying), causing children frequently to feel frightened or in danger, or the exploitation or corruption of children. Some level of emotional abuse is involved in all types of maltreatment of a child, although it may occur alone.

Sexual abuse: involves forcing or enticing a child or young person to take part in sexual activities, not necessarily involving a high level of violence, whether or not the child is aware of what is happening. The activities may involve physical contact, including assault by penetration (for example rape or oral sex) or non-penetrative acts such as masturbation, kissing, rubbing and touching outside of clothing. They may also include non-contact activities, such as involving children in looking at, or in the production of, sexual images, watching sexual activities,

encouraging children to behave in sexually inappropriate ways, or grooming a child in preparation for abuse. Sexual abuse can take place online, and technology can be used to facilitate offline abuse. Sexual abuse is not solely perpetrated by adult males. Women can also commit acts of sexual abuse, as can other children. The sexual abuse of children by other children is a specific safeguarding issue in education.

Neglect: the persistent failure to meet a child's basic physical and/or psychological needs, likely to result in the serious impairment of the child's health or development. Neglect may occur during pregnancy, for example, as a result of maternal substance abuse. Once a child is born, neglect may involve a parent or carer failing to: provide adequate food, clothing and shelter (including exclusion from home or abandonment); protect a child from physical and emotional harm or danger; ensure adequate supervision (including the use of inadequate care-givers); or ensure access to appropriate medical care or treatment. It may also include neglect of, or unresponsiveness to, a child's basic emotional needs.

Recognising Child on Child Abuse

Child on child abuse can take a number of forms:

This can include (but is not limited to) bullying (including cyberbullying); sexual violence and sexual harassment; physical abuse such as hitting, kicking, shaking, biting, hair pulling, or otherwise causing physical harm; sexting and initiating/hazing type violence and rituals.

All sexualised behaviour of children is taken seriously. Abuse will not to be passed off as banter, nor as part of growing up.

Specific differentiation will be made for children with additional needs.

All incidences of child on child abuse must be reported to the DSL. The response to any child on child incident must be to follow the incident as per the school Anti-Bullying policy. Any disclosure, allegation or concern that the child is at risk of harm will be referred in the usual way to the MASH.

Support will be given to both perpetrator and victim.

Appendix 3

Sexual Abuse & Sexual Harassment

The boundary between what is abusive and what is part of normal childhood or youthful experimentation can be blurred. The determination of whether behaviour is developmental, inappropriate or abusive will hinge around the related concepts of true consent, power imbalance and exploitation. This may include children and young people who exhibit a range of sexually problematic behaviour such as indecent exposure, obscene telephone calls, fetishism, bestiality and sexual abuse against adults, peers or children. Staff should be vigilant to:

- bullying (including cyberbullying)
- physical abuse such as hitting, kicking, shaking, biting, hair pulling, or otherwise causing physical harm
- sexual violence and sexual harassment
- sexting (also known as youth produced sexual imagery)
- initiation/hazing type violence and rituals
- upskirting

Developmental Sexual Activity

Encompasses those actions that are to be expected from children and young people as they move from infancy through to an adult understanding of their physical, emotional and behavioural relationships with each other. Such sexual activity is essentially information gathering and experience testing. It is characterised by mutuality and of the seeking of consent.

Inappropriate Sexual Behaviour

Can be inappropriate socially, inappropriate to development, or both. In considering whether behaviour fits into this category, it is important to consider what negative effects it has on any of the parties involved and what concerns it raises about a child or young person. It should be recognised that some actions may be motivated by information seeking, but still cause significant upset, confusion, worry, physical damage, etc. It may also be that the behaviour is “acting out” which may derive from other sexual situations to which the child or young person has been exposed. If an act appears to have been inappropriate, there may still be a need for some form of behaviour management or intervention. For some children, educative inputs may be enough to address the behaviour.

Abusive sexual activity included any behaviour involving coercion, threats, aggression together with secrecy, or where one participant relies on an unequal power base. In order to more fully determine the nature of the incident the following factors should be given consideration. The presence of exploitation in terms of:

Equality – consider differentials of physical, cognitive and emotional development, power and control and authority, passive and assertive tendencies

Consent – agreement including all the following:

- Understanding that is proposed based on age, maturity, development level, functioning and experience
- Knowledge of society’s standards for what is being proposed

- Awareness of potential consequences and alternatives
- Assumption that agreements or disagreements will be respected equally
- Voluntary decision
- Mental competence

Coercion – the young perpetrator who abuses may use techniques like bribing, manipulation and emotional threats of secondary gains and losses that is loss of love, friendship, etc. Some may use physical force, brutality or the threat of these regardless of victim resistance.

In evaluating sexual behaviour of children and young people, the above information should be used only as a guide. Further information and advice is available in the Devon multi-agency protocol “Working with Sexually Active Young People” available at https://www.proceduresonline.com/swcpp/devon/p_underage_sexual_act.html or go to South West Child Protection Procedures www.proceduresonline.com choose Child Protection Procedures, scroll down to Safeguarding Practice Guidance.

Appendix 4

Exploitation (including Child Sex Exploitation, Child Criminal Exploitation and County Lines)

The following list of indicators is not exhaustive or definitive but it does highlight common signs which can assist professionals in identifying children or young people who may be victims of sexual exploitation.

Signs include:

- going missing from home, school or care
- regular school absence/truancy
- underage sexual activity
- inappropriate sexual or sexualised behaviour
- sexually risky behaviour, 'swapping' sex
- repeat sexually transmitted infections
- in girls, repeat pregnancy, abortions, miscarriage
- receiving unexplained gifts or gifts from unknown sources
- having multiple mobile phones and worrying about losing contact via mobile
- online safety concerns such as youth produced sexual imagery or being coerced into sharing explicit images.
- having unaffordable new things (clothes, mobile) or expensive habits (alcohol, drugs)
- changes in the way they dress
- going to hotels or other unusual locations to meet friends
- seen at known places of concern
- moving around the country, appearing in new towns or cities, not knowing where they are
- getting in/out of different cars driven by unknown adults
- having older boyfriends or girlfriends
- contact with known perpetrators
- involved in abusive relationships, intimidated and fearful of certain people or situations
- hanging out with groups of older people, or anti-social groups, or with other vulnerable peers
- associating with other young people involved in sexual exploitation
- recruiting other young people to exploitative situations
- truancy, exclusion, disengagement with school, opting out of education altogether
- unexplained changes in behaviour or personality (chaotic, aggressive, sexual)
- mood swings, volatile behaviour, emotional distress
- self-harming, suicidal thoughts, suicide attempts, overdosing, eating disorders
- drug or alcohol misuse
- getting involved in crime
- police involvement, police records
- involved in gangs, gang fights, gang membership

- injuries from physical assault, physical restraint, sexual assault.

Child Criminal Exploitation can include children being forced or manipulated into transporting drugs or money through county lines, working in cannabis factories, shoplifting or pickpocketing. They can also be forced or manipulated into committing vehicle crime or threatening/committing serious violence to others

County lines is a term used to describe gangs and organised criminal networks involved in the exporting of illegal drugs (primarily crack cocaine and heroin) into one or more importing areas (within the UK), using dedicated mobile phone lines or other form of ‘deal line.’

Exploitation is an integral part of the county lines offending model with children and vulnerable adults being exploited to move (and store) drugs and money. The same grooming models used to coerce, intimidate and abuse individuals for sexual and criminal exploitation are also used for grooming vulnerable individuals for county lines.

CSE is a form of child sexual abuse. Sexual abuse may involve physical contact, including assault by penetration (for example, rape or oral sex) or nonpenetrative acts such as masturbation, kissing, rubbing, and touching outside clothing. It may include non-contact activities, such as involving children in the production of sexual images, forcing children to look at sexual images or watch sexual activities, encouraging children to behave in sexually inappropriate ways or grooming a child in preparation for abuse including via the internet.

For further information on signs of a child’s involvement in sexual exploitation: [Child sexual exploitation: guide for practitioners](#)

For further information on County Lines: [Criminal exploitation of children and vulnerable adults: county lines guidance](#)

Appendix 5

Female Genital Mutilation (FGM)

It is essential that staff are aware of FGM practices and the need to look for signs, symptoms and other indicators of FGM. If a member of staff, in the course of their work, discovers that **an act of FGM appears to have been carried out, the member of staff must report this to the Police.**

Female Genital Mutilation (FGM) is illegal in England and Wales under the FGM Act 2003 (“the 2003 Act”). It is a form of child abuse and violence against women. FGM comprises all procedures involving partial or total removal of the external female genitalia for non-medical reasons.

Section 5B of the 2003 Act¹ introduces a mandatory reporting duty which requires regulated health and social care professionals and teachers in England and Wales to report ‘known’ cases of FGM in under 18s which they identify in the course of their professional work to the police. The duty came into force on 31 October 2015.

What is FGM?

It involves procedures that intentionally alter/injure the female genital organs for non-medical reasons.

Is FGM legal?

FGM is internationally recognised as a violation of human rights of girls and women. It is illegal in most countries including the UK.

Circumstances and occurrences that may point to FGM happening are:

- Child talking about getting ready for a special ceremony
- Family taking a long trip abroad
- Child’s family being from one of the ‘at risk’ communities for FGM (Kenya, Somalia, Sudan, Sierra Leon, Egypt, Nigeria, Eritrea as well as non-African communities including Yemeni, Afghani, Kurdistan, Indonesia and Pakistan)
- Knowledge that the child’s sibling has undergone FGM
- Child talks about going abroad to be ‘cut’ or to prepare for marriage

Signs that may indicate a child has undergone FGM:

- Prolonged absence from school and other activities
- Behaviour change on return from a holiday abroad, such as being withdrawn and appearing subdued
- Bladder or menstrual problems
- Finding it difficult to sit still and looking uncomfortable
- Complaining about pain between the legs
- Mentioning something somebody did to them that they are not allowed to talk about

- Secretive behaviour, including isolating themselves from the group
- Reluctance to take part in physical activity
- Repeated urinal tract infection
- Disclosure

The 'One Chance' rule

As with Forced Marriage there is the 'One Chance' rule. It is essential that settings /schools/colleges take action **without delay** and make a referral to children's services.

Appendix 6

Domestic Abuse (including Operation Encompass)

How does it affect children?

Children can be traumatised by seeing, hearing and experiencing violence and abuse. They may also be directly targeted by the abuser or take on a protective role and get caught in the middle. In the long term this can lead to serious long lasting emotional and psychological impact on children. In some cases children may blame themselves for the abuse or may have had to leave the family home as a result.

What are the signs to look out for?

Children affected by domestic abuse reflect their distress in a variety of ways. They may change their usual behaviour and become withdrawn, tired, start to wet the bed and have behavioural difficulties. They may not want to leave their house or may become reluctant to return. Others will excel, using their time in your care as a way to escape from their home life. None of these signs are exclusive to domestic abuse so when you are considering changes in behaviours and concerns about a child, think about whether domestic abuse may be a factor.

What should I do if I suspect a family is affected by domestic abuse?

Contact: <https://new.devon.gov.uk/dsva/>

If you are concerned about a child or young person in Devon please contact the Multi-Agency Safeguarding Hub (Children's Front Door) on 0345 155 1071 or email mashsecure@devon.gov.uk.

If you are concerned about an adult (aged 16+) in Devon please complete the [Risk Identification Checklist](#) (Safelives DASH RIC) to identify the level of risk which support service to refer them too, and follow the advice on the [MARAC page](#) for all levels of risk.

If you are concerned about a vulnerable adult please contact Care Direct on 0845 155 1007 (8am – 8pm Monday to Friday and 9am – 1pm on Saturdays) In an emergency, please contact the Emergency Duty Service 0845 6000 388 or email csc.caredirect@devon.gov.uk.

Splitz Support Service is a charity delivering support services to women and young people experiencing the trauma of domestic abuse and sexual violence. Telephone 0345 155 1074 or email admin@splitzdevon.org

SAFE (Stop Abuse For Everyone) is a charity based in Exeter providing help and support to children and families who have experienced domestic abuse and violence. Telephone 030 30 30 0112 or email hello@safe-services.org.uk (Monday to Friday, 9am – 5pm)

National Domestic Abuse Helpline Refuge runs the National Domestic Abuse Helpline, available 24hour a day 0808 2000 247 and its website offers guidance and support for potential victims.

Refuge: <https://www.refuge.org.uk/>

Operation Encompass helps police and schools work together to provide emotional and practical help for children. Police will inform the 'key adult' within school if they have been

called to an incident of domestic abuse, where there are children in the household before registration the next day.

Appendix 7

Indicators of vulnerability to radicalisation

Radicalisation refers to the process by which a person comes to support terrorism and forms of extremism leading to terrorism.

1. Extremism is defined by the Government in the Prevent Strategy as:

Vocal or active opposition to fundamental British values, including democracy, the rule of law, individual liberty and mutual respect and tolerance of different faiths and beliefs. We also include in our definition of extremism calls for the death of members of our armed forces, whether in this country or overseas.

2. Extremism is defined by the Crown Prosecution Service as:
The demonstration of unacceptable behaviour by using any means or medium to express views which:
 - Encourage, justify or glorify terrorist violence in furtherance of particular beliefs;
 - Seek to provoke others to terrorist acts;
 - Encourage other serious criminal activity or seek to provoke others to serious criminal acts; or
 - Foster hatred which might lead to inter-community violence in the UK.
3. There is no such thing as a “typical extremist”: those who become involved in extremist actions come from a range of backgrounds and experiences, and most individuals, even those who hold radical views, do not become involved in violent extremist activity.
4. Pupils may become susceptible to radicalisation through a range of social, personal and environmental factors - it is known that violent extremists exploit vulnerabilities in individuals to drive a wedge between them and their families and communities. It is vital that school staff are able to recognise those vulnerabilities.
5. Indicators of vulnerability include:
 - Identity Crisis – the student / pupil is distanced from their cultural / religious heritage and experiences discomfort about their place in society;
 - Personal Crisis – the student / pupil may be experiencing family tensions; a sense of isolation; and low self-esteem; they may have dissociated from their existing friendship group and become involved with a new and different group of friends; they may be searching for answers to questions about identity, faith and belonging;
 - Personal Circumstances – migration; local community tensions; and events affecting the student / pupil’s country or region of origin may contribute to a sense of grievance that is triggered by personal experience of racism or discrimination or aspects of Government policy;

- Unmet Aspirations – the student / pupil may have perceptions of injustice; a feeling of failure; rejection of civic life;
 - Experiences of Criminality – which may include involvement with criminal groups, imprisonment, and poor resettlement / reintegration;
 - Special Educational Need – students / pupils may experience difficulties with social interaction, empathy with others, understanding the consequences of their actions and awareness of the motivations of others.
7. However, this list is not exhaustive, nor does it mean that all young people experiencing the above are at risk of radicalisation for the purposes of violent extremism.
8. More critical risk factors could include:
- Being in contact with extremist recruiters;
 - Accessing violent extremist websites, especially those with a social networking element;
 - Possessing or accessing violent extremist literature;
 - Using extremist narratives and a global ideology to explain personal disadvantage;
 - Justifying the use of violence to solve societal issues;
 - Joining or seeking to join extremist organisations; and
 - Significant changes to appearance and / or behaviour;
 - Experiencing a high level of social isolation resulting in issues of identity crisis and / or personal crisis.

The Prevent duty ensures schools and colleges have ‘due regard’ to the need to prevent people from being drawn into terrorism.

Channel is the voluntary, confidential support programme which focuses on providing support at an early stage to individuals that have been identified as being vulnerable to radicalisation. Prevent referrals may be passed to the multi-agency Channel panel to determine whether individuals require support.

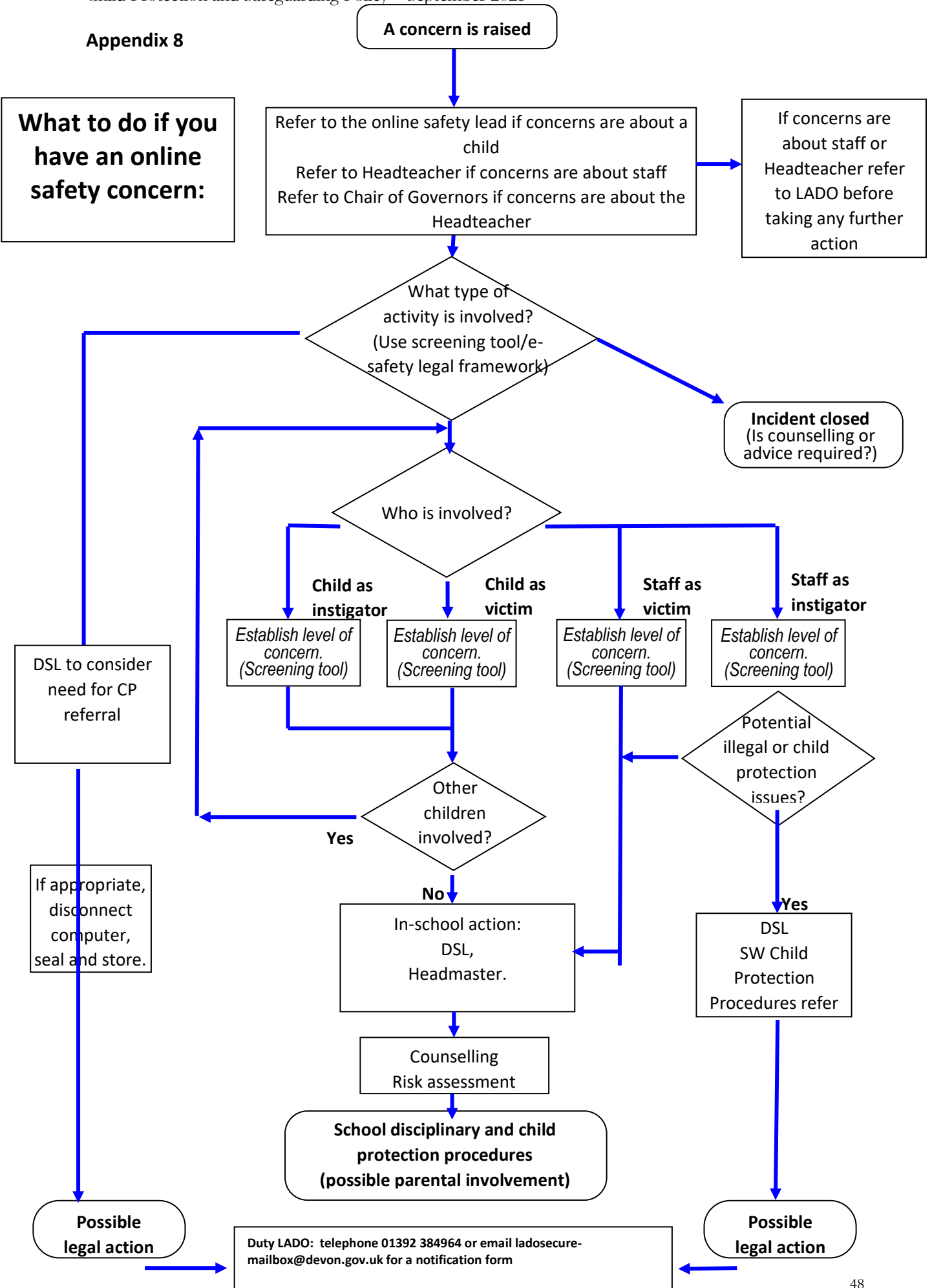
[The Prevent Duty can be accessed via this link.](#)

[Prevent duty guidance: England and Wales \(2023\) - GOV.UK \(www.gov.uk\)](#)

Guidance on Channel <https://www.gov.uk/government/publications/channel-guidance>

Further information can be obtained from the Home Office website.

Appendix 8



Appendix 9

Further advice on child protection is available from:

NSPCC: <http://www.nspcc.org.uk/>

Childline: <http://www.childline.org.uk/pages/home.aspx>

Anti-Bullying Alliance: <http://anti-bullyingalliance.org.uk/>

Childnet International –making the internet a great and safe place for children. Includes resources for professionals and parents <http://www.childnet.com/>

Thinkuknow (includes resources for professionals and parents) <https://www.thinkuknow.co.uk/>

Safer Internet Centre <http://www.saferinternet.org.uk/>

Transgender <http://www.mermaidsuk.org.uk/>

[Schools transgender toolkit](#)

NSPCC: [Children with special educational needs and disabilities \(SEND\) | NSPCC Learning](#)

NSPCC: [Safeguarding d/Deaf and disabled children and young people | NSPCC Learning](#)

Knife Crime: <https://www.college.police.uk/guidance/knife-crime-evidence-briefing/understanding-causes-knife-crime>

Knife Crime One Minute Guide: <https://www.devon.gov.uk/support-schools-settings/safeguarding/guidance-policy-and-tools-2/safeguarding-one-minute-guides/no-69-knife-crime/>

Lucy Faithful Foundation: [Shore - Lucy Faithfull Foundation](#)

The Children’s Society: [Preventing Child Sexual Exploitation | The Children's Society](#)

CSA Centre: [Resources for education settings | CSA Centre](#)



Children's Front Door



If you are concerned that a child is being abused, or to request Early Help (L3) support you can

call: 0345 155 1071 or

complete the Request for Support online form available at:

<https://devoncountycouncil.outsystemsenterprise.com/MASH/homepage>

The DevonSCP Children's Front Door **consultation line** for **professionals only**:
01392 388428

Emergency Duty Team out of hours **0345 6000 388**

Police non-emergency 101

For all LADO enquiries Exeter (01392) 384964

childsc.localauthoritydesignatedofficersecure-mailbox@devon.gov.uk

Further info: <https://new.devon.gov.uk>

[Managing allegations - Devon Children and Families Partnership \(dcfp.org.uk\)](http://dcfp.org.uk)

Early Help Team

Head of Service: Lise Bird

Early Help Locality Contact information:

<https://www.devonscp.org.uk/document/early-help-locality-contact-information/>

Locality Early Help Mailbox

North: earlyhelpnorthsecure-mailbox@devon.gov.uk

Mid & East: earlyhelpmideastsecure-mailbox@devon.gov.uk

South & West: earlyhelpsouthsecure-mailbox@devon.gov.uk

Exeter: earlyhelpexetersecure-mailbox@devon.gov.uk

For emergencies outside of office hours please call:

0345 6000 388